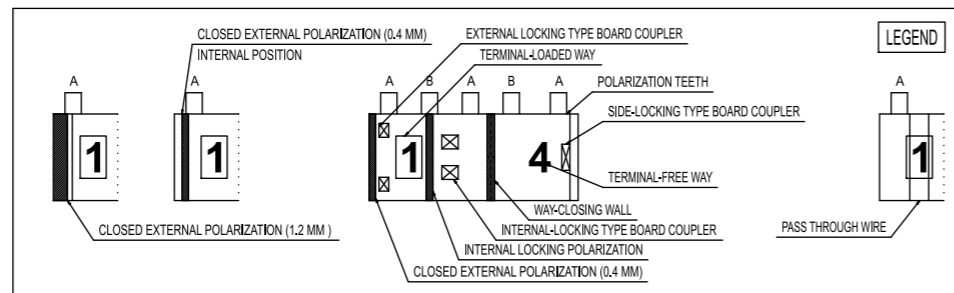
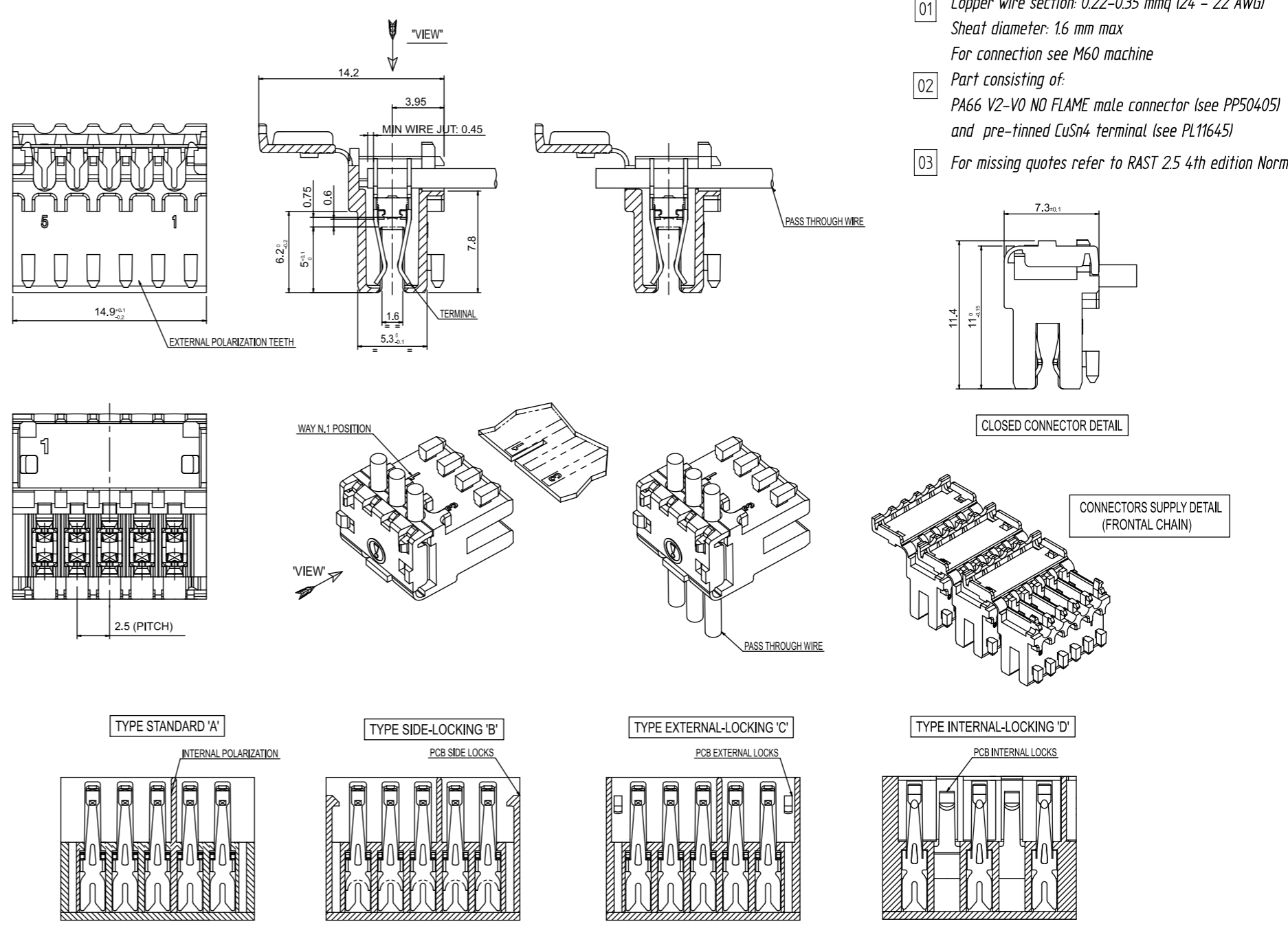


N°	configuration (VIEW)	INARCA code	Board	N°	configuration (VIEW)	INARCA code	Board
00	A B A B A B 1 2 3 4 5	STANDARD XX40500WWY	1 2 3 4 5	18	A B A B A B 1 2 3 4 5	EXTERNAL-LOCKING XX40518WWY	1 2 3 4 5
01	A B A B A B 1 2 3 4 5	STANDARD XX40501WWY	1 2 3 4 5	19	A B A B A B 1 2 3 4 5	INTERNAL-LOCKING XX40519WWY	1 2 3 4 5
02	B A B A 1 2 3 4 5	SIDE-LOCKING XX40502WWY	1 2 3 4 5	20	A B A B A B 1 2 3 4 5	STANDARD XX40520WWY	1 2 3 4 5
03	A B A B A B 1 2 3 4 5	EXTERNAL-LOCKING XX40503WWY	1 2 3 4 5	21	A B A B A B 1 2 3 4 5	INTERNAL-LOCKING XX40521WWY	1 2 3 4 5
04	B A B A 1 2 3 4 5	SIDE-LOCKING XX40504WWY	1 2 3 4 5	22	A B A B A B 1 2 3 4 5	EXTERNAL-LOCKING XX40522WWY	1 2 3 4 5
05	B A B A 1 2 3 4 5	SIDE-LOCKING XX40505WWY	1 2 3 4 5	23	A B A B A B 1 2 3 4 5	STANDARD XX40523WWY	1 2 3 4 5
06	A B A B A B 1 2 3 4 5	STANDARD XX40506WWY	1 2 3 4 5	24	A B A B A B 1 2 3 4 5	STANDARD XX40524WWY	1 2 3 4 5
07	B A B A 1 2 3 4 5	SIDE-LOCKING XX40507WWY	1 2 3 4 5	25	A B A B A B 1 2 3 4 5	STANDARD XX40525WWY	1 2 3 4 5
08	A B A B A B 1 2 3 4 5	STANDARD XX40508WWY	1 2 3 4 5	26	A B A B A B 1 2 3 4 5	STANDARD XX40526WWY	1 2 3 4 5
09	A B A B A B 1 2 3 4 5	STANDARD XX40509WWY	1 2 3 4 5	27	A B A B A B 1 2 3 4 5	EXTERNAL-LOCKING XX40527WWY	1 2 3 4 5
10	A B A B A B 1 2 3 4 5	INTERNAL-LOCKING XX40510WWY	1 2 3 4 5	28	A B A B A B 1 2 3 4 5	EXTERNAL-LOCKING XX40528WWY	1 2 3 4 5
11	A B A B A B 1 2 3 4 5	INTERNAL-LOCKING XX40511WWY	1 2 3 4 5	29	A B A B A B 1 2 3 4 5	EXTERNAL-LOCKING XX40529WWY PASS THROUGH WIRE	1 2 3 4 5
12	A B A B A B 1 2 3 4 5	INTERNAL-LOCKING XX40512WWY	1 2 3 4 5	30	A B A B A B 1 2 3 4 5	EXTERNAL-LOCKING XX40530WWY PASS THROUGH WIRE	1 2 3 4 5
13	A B A B A B 1 2 3 4 5	INTERNAL-LOCKING XX40513WWY	1 2 3 4 5	31	A B A B A B 1 2 3 4 5	EXTERNAL-LOCKING XX40531WWY PASS THROUGH WIRE	1 2 3 4 5
14	B A B A 1 2 3 4 5	SIDE-LOCKING XX40514WWY	1 2 3 4 5				
15	A B A B A B 1 2 3 4 5	EXTERNAL-LOCKING XX40515WWY	1 2 3 4 5				
16	A B A B A B 1 2 3 4 5	EXTERNAL-LOCKING XX40516WWY	1 2 3 4 5				
17	A B A B A B 1 2 3 4 5	EXTERNAL-LOCKING XX40517WWY	1 2 3 4 5				

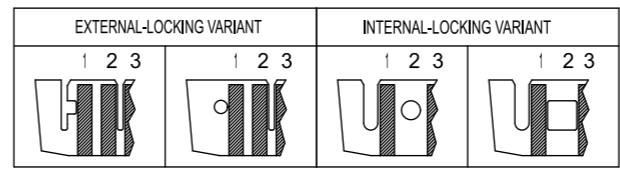


GENERAL 5-WAYS RAST 2.5 CODE: XX405ZZWWY

MATERIAL TABLE	POLARIZATION TABLE	COLOUR TABLE	SUPPLY MODE
XX MATERIAL	ZZ POLARIZATIONS	WW COLOUR	Y SUPPLY
81 PA66 V2 NO FLAME	00 see configuration	70 NEUTRAL	6 FRONTAL CHAIN
85 PA66 V0 NO FLAME	01 see configuration	71 RED	
	... see configuration	73 BLUE	



- 01 Copper wire section: 0.22-0.35 mm² (24 - 22 AWG)
Sheat diameter: 1.6 mm max
For connection see M60 machine
- 02 Part consisting of:
PA66 V2-V0 NO FLAME male connector (see PP50405)
and pre-tinned CuSn4 terminal (see PL11645)
- 03 For missing quotes refer to RAST 2.5 4th edition Norm



CUSTOMER DRAWING

UNLESS OTHERWISE SPECIFIED		DRAWING N°		NAME			
ALL DIMENSIONS IN MM		PC80405		INAR-CONNECTOR RAST 2,5 - 5 WAYS			
GENERAL TOLERANCES		VERSION		MATERIAL		DRF. LISSANDRON DT. 2003-04-16 07:51:35	
LINEAR	±0.2mm	36		SEE TABLE		APP. P.TONIOLO DT. 18/10/2022	
ANGULAR		PROJECT		FINISH		PRD. P.TONIOLO DT. 18/10/2022	
NON DIMENSIONED EDGES		PRODUCT SPECIFICATION		SIZE A3		FRZ. DT.	
SURFACE ROUGHNESS		151002500000		SCALE 2.5:1		SHEET 1 OF 1	

INARCA S.P.A. PADOVA ITALY ACCORDING TO THE LAW RESERVES THE RIGHT OF PROPERTY OF THE PRESENT DRAWING AND ITS REPRODUCTION AND/OR TRANSMISSION WITHOUT EXPRESS AUTHORIZATION BY THE COMPANY IS FORBIDDEN