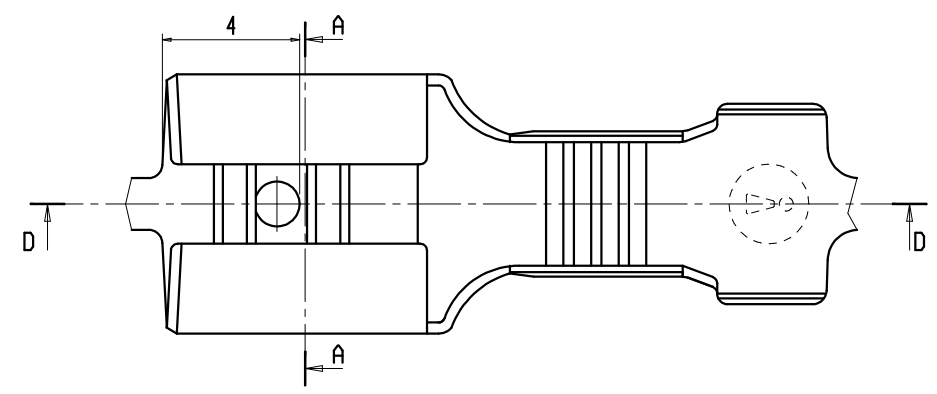
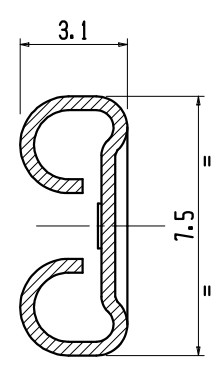
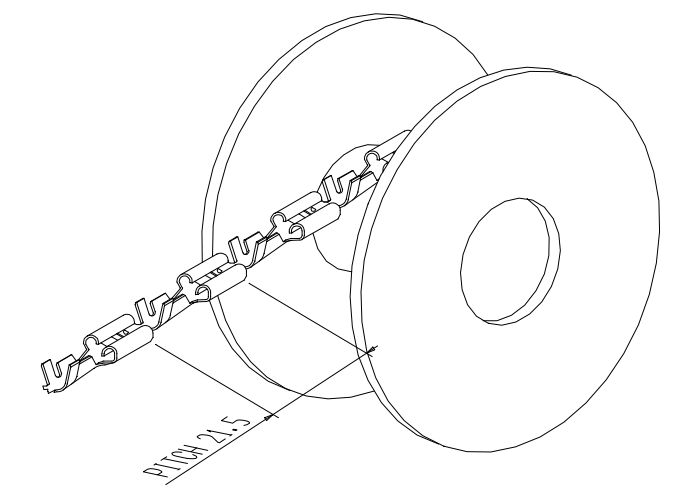
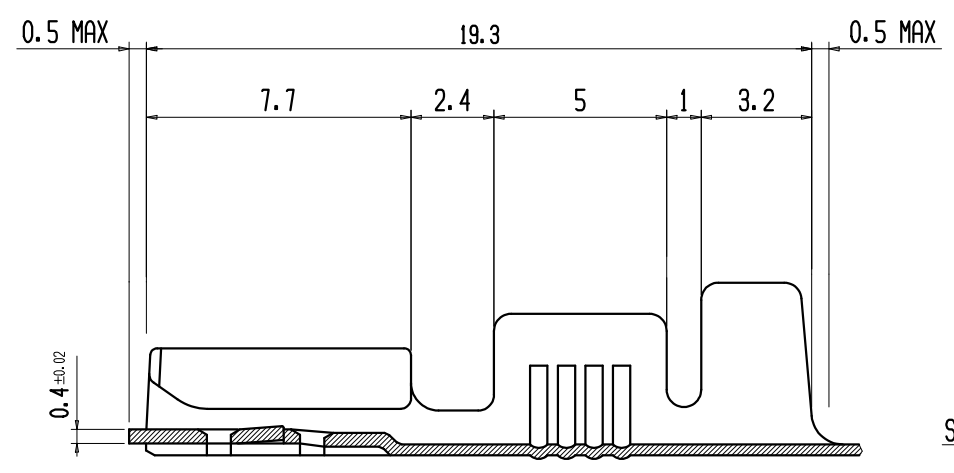


- 01 Mating with TAB terminal 6.3x0.8 mm (DIN 46244)
- 02 Crimping wire section: 1 - 2.5 mmq  
Sheat diameter: 2.5 - 4 mm  
Crimped with frontal mini-applicator code:  
AT750210101 ADJUSTMENT ROTATING CLICK  
AT750210101W ADJUSTMENT MICROMETRIC CLICK  
AT750210101S FOR STEEL ADJUSTMENT ROTATING CLICK



DISEGNO PER CLIENTE  
SOLO PER RIFERIMENTO

CUSTOMER DRAWING  
FOR REFERENCE ONLY

ORDER N.	GENERAL TOLLERANCE	Angularity	Non Dimensioned Edges	Surface Roughness												
DRAWING N. PL10101	MATERIAL															
VERSION 6 MOD. INDEX 7	HEAT TREATMENT															
PROJECT	FINISHING															
	LINEAR TOLLERANCE	Size	f <sub>no</sub>	> 3	> 6	> 10	> 18	> 30	> 50	> 80	> 120	> 180	> 250	> 315	> 400	
	ISO J13		a 3	a 6	a 10	a 18	a 30	a 50	a 80	a 120	a 180	a 250	a 315	a 400	a 500	
			±	0.03	0.04	0.05	0.06	0.07	0.08	0.1	0.11	0.13	0.15	0.16	0.18	0.2
			±	0.07	0.09	0.11	0.14	0.17	0.2	0.23	0.27	0.32	0.36	0.4	0.45	0.5
			±	-	-	0.75	0.9	1.05	1.25	1.5	1.75	2	2.3	2.6	2.85	3.15
NAME																

0010101005	CuZn	-	cURus
0910101001	CuNiZn	-	
0010101201	CuZn	TinPlated	cURus-VDE
0010101001	CuZn	-	cURus
CODE	MATERIAL	SURFACE FINISH	VALIDATION